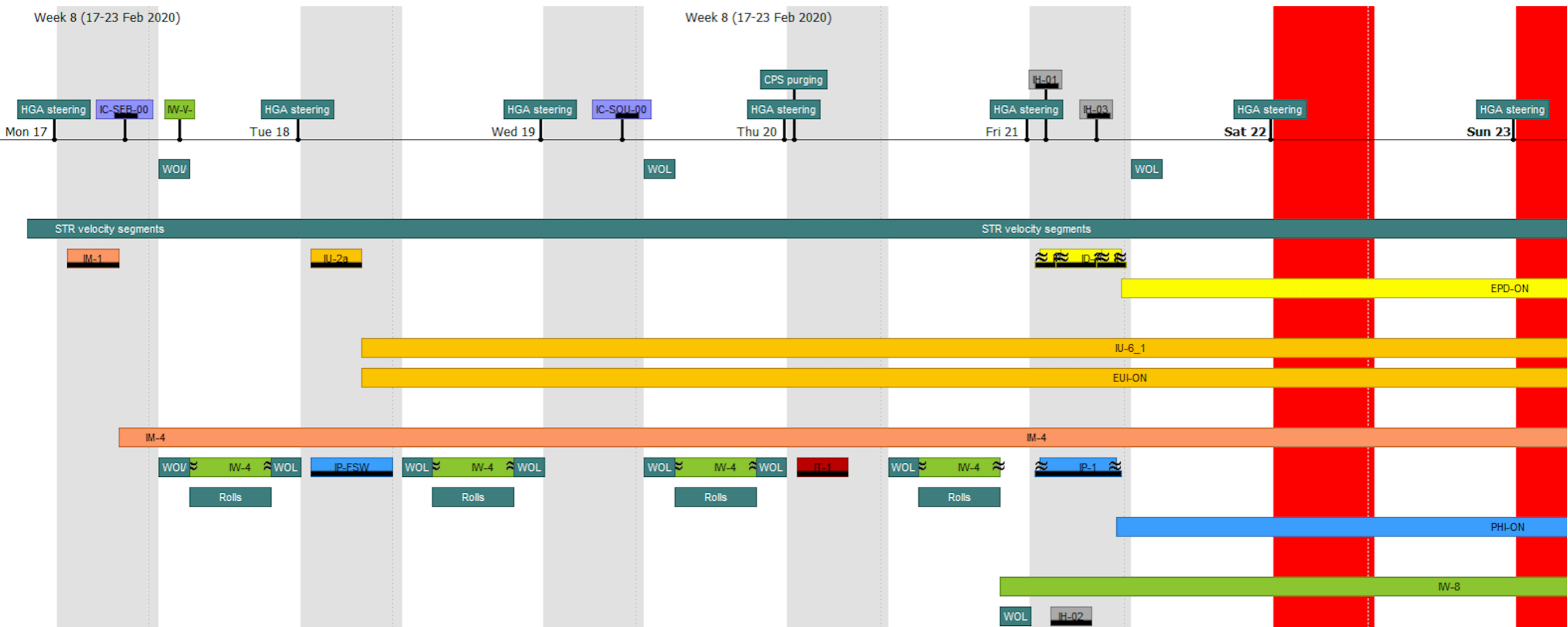


Timeline of the commissioning activities

- Timeline of each activity (PDOR) have to be sent to MOC 1 month before activity.
- Before mid January : ROC sends PDORs up to March 22
- End of February : ROC sends PDORs for the end of NECP



IW-1 : SFT

- Timeline built in progress with CNES
- Based on SFT played on ground
- Add 1h to the actual hours : to take into account SCM heating

IW-4 : Calibration Rolls

- 4 slots of 8h
- 1 roll ~ 1h -> ~8 rolls in each slot

RULES :

- HK period every second during slots, and every minute in between
- SBM Detection Mode
- Configurations :
 - Unique configuration for TDS and TNR-HFR
 - 4h in Config 1 for LFR and BIAS on resistance
 - 4h in Config 2 for LFR and BIAS on antenna

QUESTIONS:

- Dump of TSWF every 5 min - Does the dump stop the acquisition of other data ?
- Dump of SBM1 data to be forced ? Every ?? (1 dump ~ 15 min)
- Config LFR/BIAS ok ?
- HK period ok ?

IW-8 : Continuous activity

- Start after the last roll —> End of NECP

GLOBAL RULES : PDOR from Monday 00:00 to Sunday 23:59 from 21/02 to 22/03

- HK period every second until 22/03, and then every 10s (or minute ?)
- Normal Mode - Default configuration
- Bias Calibration at 01:00 every day (duration : ~8min)
- Monday 02:00 : LFR/SCM Calibration (duration : ~4min)
- Tuesday 02:00 : TNR-HFR Calibration (duration : ~8min)
- Thursday 02:00 : Load k-coefficients values (duration : few seconds)
- TSWF dump at 04:00, 10:00, 16:00, 22:00 (~19s)

QUESTIONS:

- Note that for each calibration/sweep -> SERVICE mode : no data acquired
- Normal mode or SBM ? (Maybe SBM after the 22/03 ?)
- HK period ok ?
- Update of BIAS currents ? -> every wednesday at 2am

IW-8 : Continuous activity

SPECIFIC RULES :

- From 21/02 to 01/03, every day :
 - 06:00 : Bias Sweep Test 1 (duration : 24 min)
 - 12:00 : Bias Sweep Test 2 (duration : 15 min)
 - 17:00 : Bias Sweep Test 3 (duration : 23 min)
- From 02/03 to 14/03, every day :
 - Bias sweep Test 4 every 2h from midnight (duration : 15 min)
- On March 15:
 - BIAS GAIN at 100 instead of 5 for the entire day
- From 15/03 to 22/03 (or the end) :
 - Bias sweep default at 03:00 and 15:00 (duration : 8 min)

QUESTIONS:

- BIAS Sweep on a row or like this : in a row
- Be careful that until 14/03, Normal default data will be acquired in small blocks (a lot of sweep/calib spread among the day)
- BIAS Test 3 : CP_DPU_BIA_SWEEP_DURATION has to be integer ! → We have to change the test
- Other action ?

Next steps

If we all agree on the previous slides :

Diane : Play on the EM1 in almost real conditions

- Deployment sequences
- SFT
- Calibration Rolls
- Condensed first weeks of continuous activity

Diane : Send the CDF files to all of you before Friday

Instrument teams : Check the data and the configuration to be sure everything is ok **before January 6**

Diane : Prepare the corresponding PDOR and send them to MOC **before January 17**