

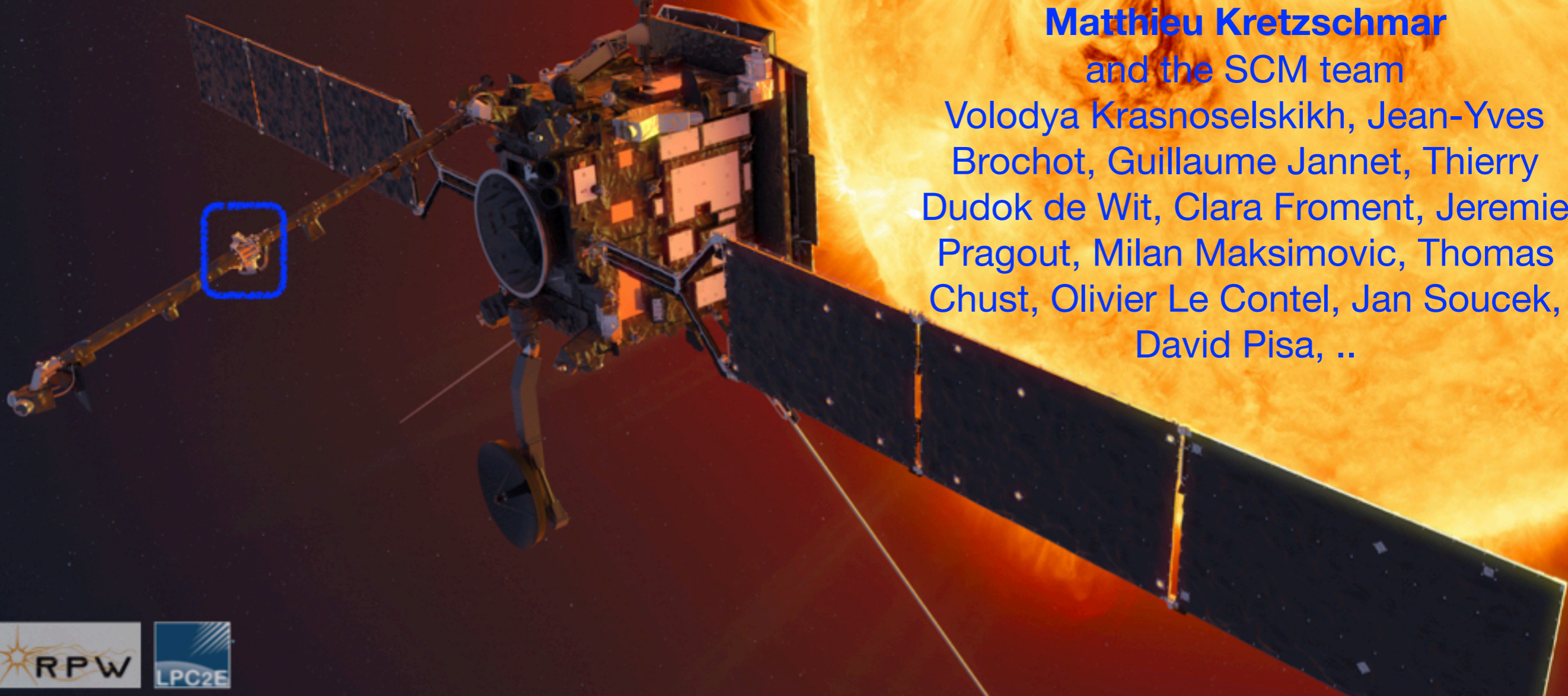


RPW / SCM

The RPW/Search Coil Magnetometer onboard Solar Orbiter

**Matthieu Kretzschmar
and the SCM team**

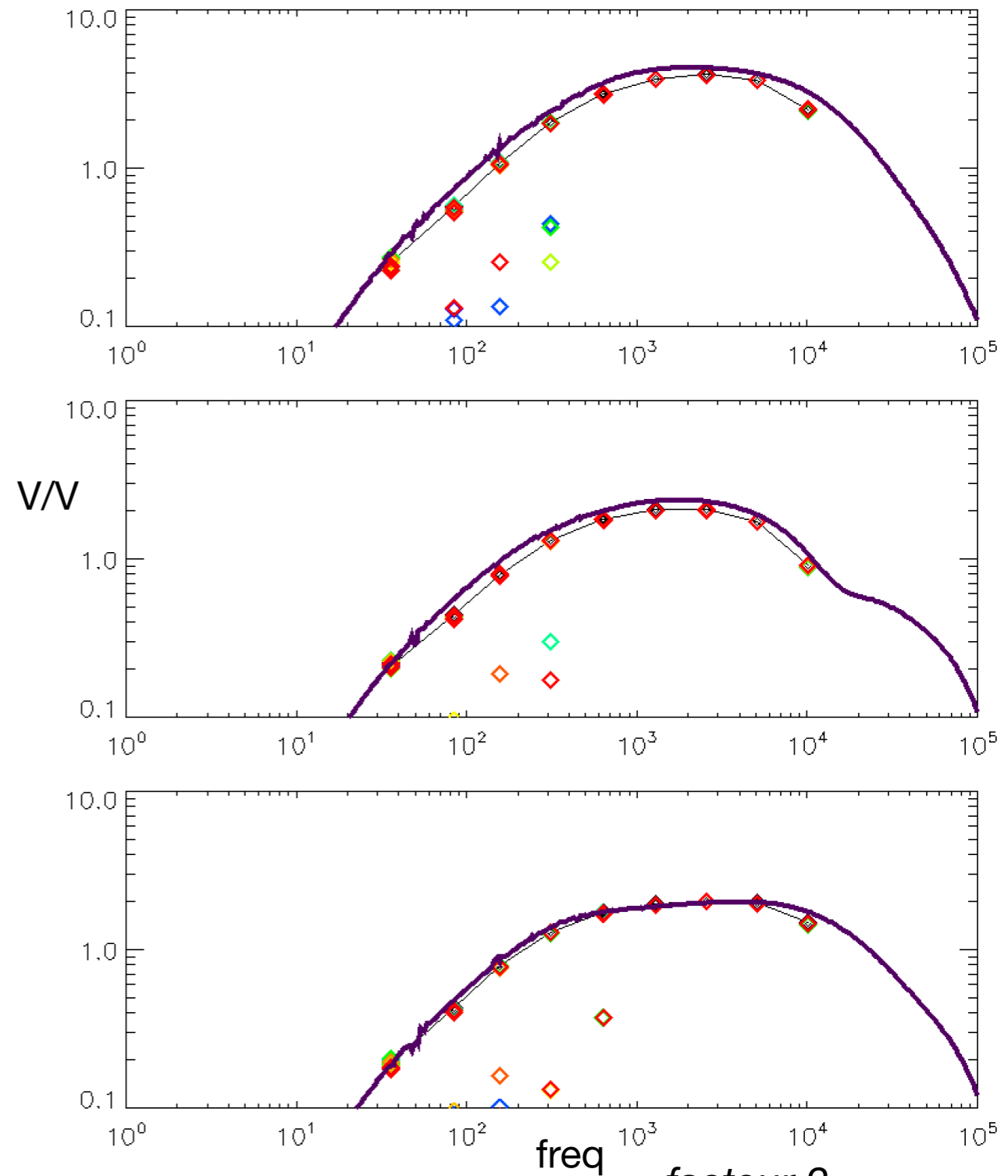
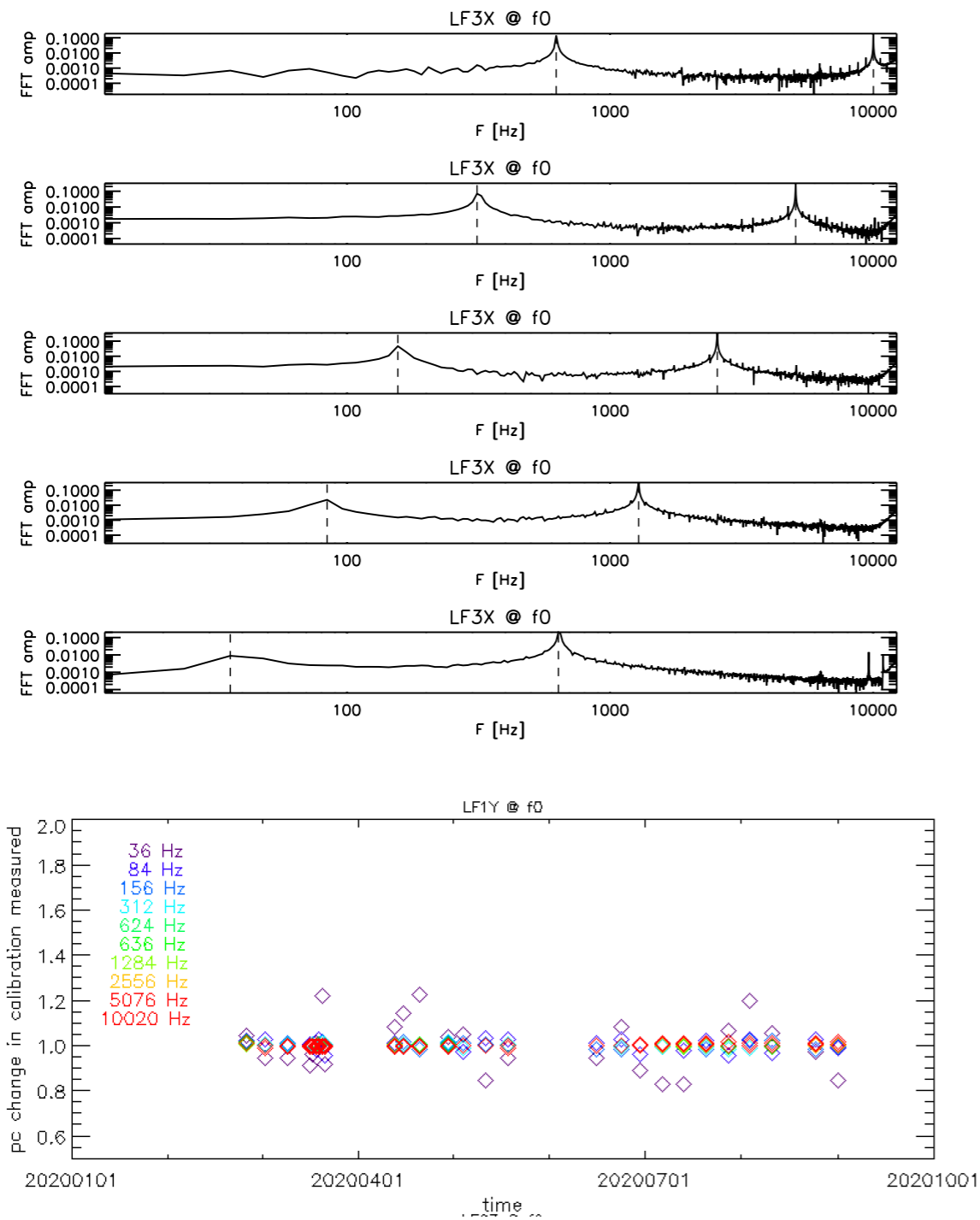
Volodya Krasnoselskikh, Jean-Yves
Brochot, Guillaume Jannet, Thierry
Dudok de Wit, Clara Froment, Jeremie
Pragout, Milan Maksimovic, Thomas
Chust, Olivier Le Contel, Jan Soucek,
David Pisa, ..



Overview

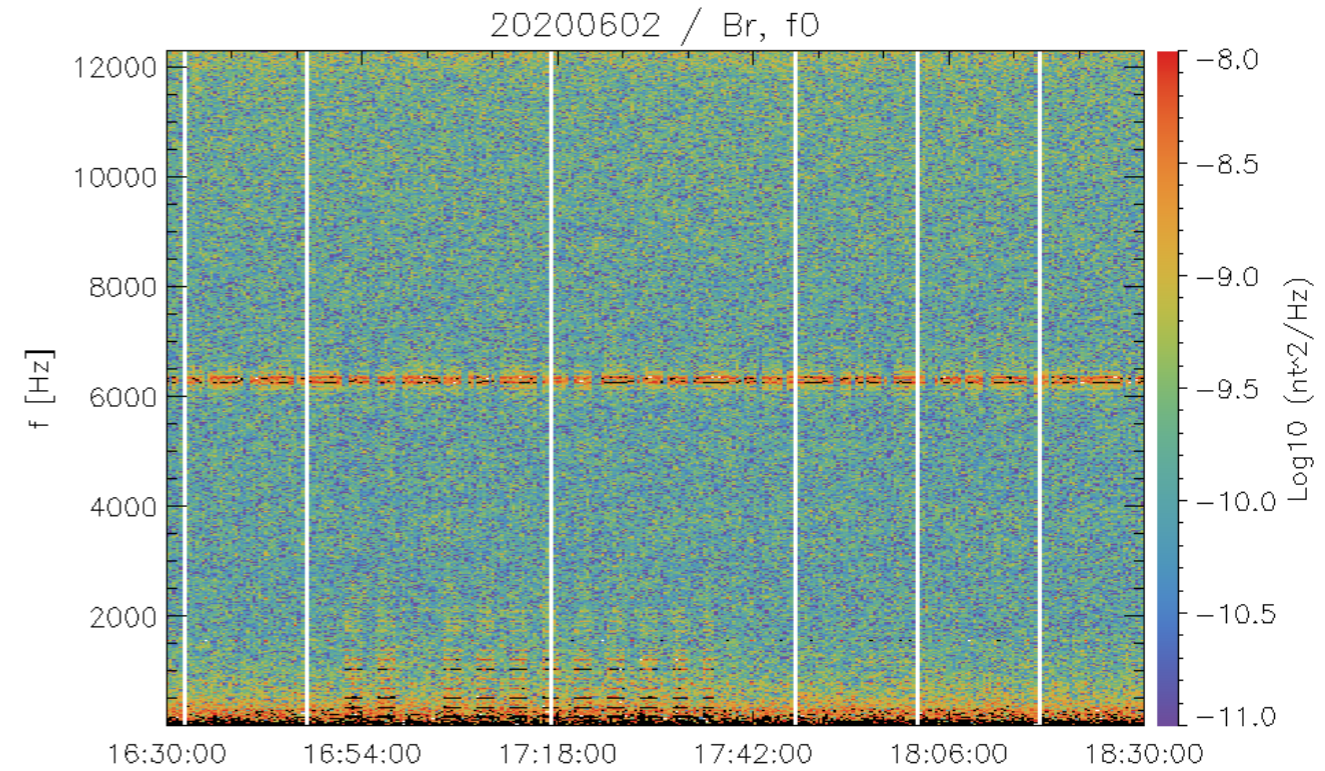
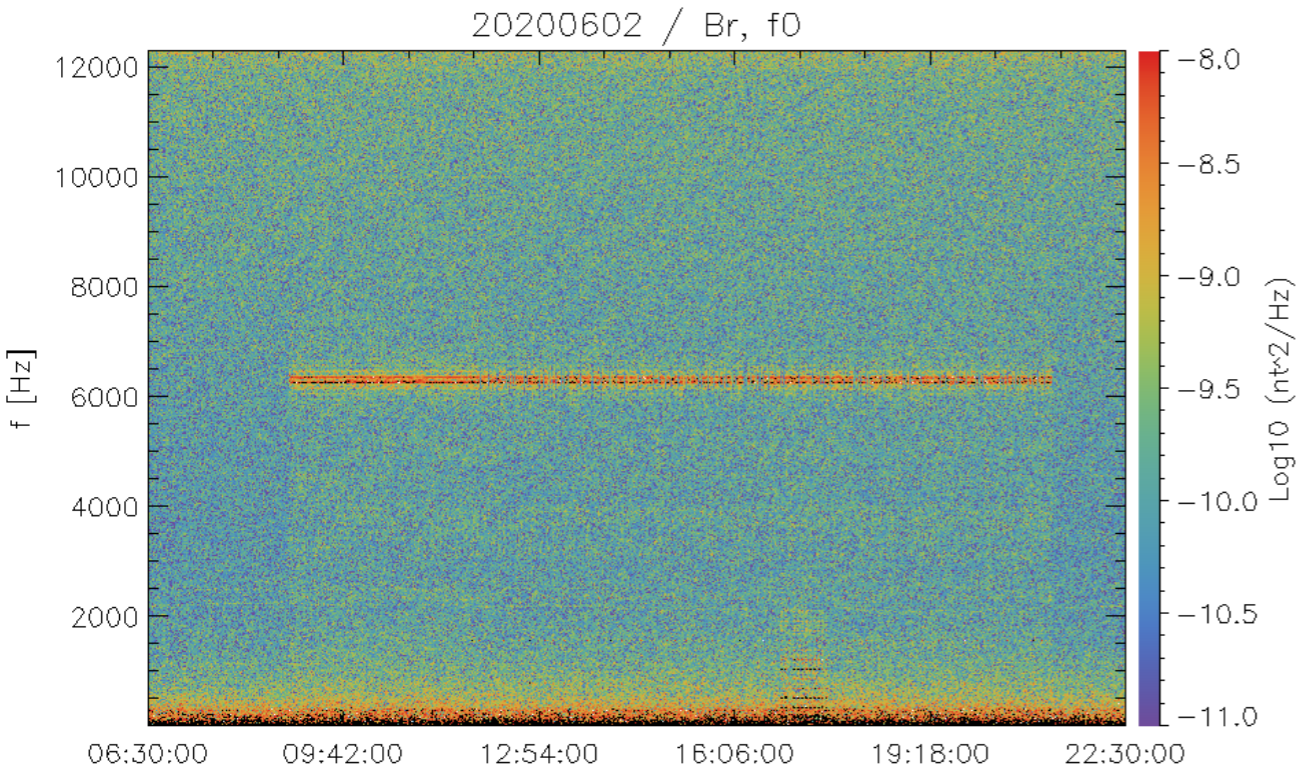
- SCM is performing well.
- New team member: Jérémie Pragout
- Unchanged frequency response of SCM
- SCM affected by HI and EUI
- Software: new version of skeletons & scmcac: quality bitmask is set (bit0: SCM outworking or unknown temperature, bit1: SCM heater on/off transition, bit2: LFR onboard calibration signal is ON)
- Data overview

SCM onboard calibration



➔ Unchanged frequency response of SCM

Results from EMC campaigning



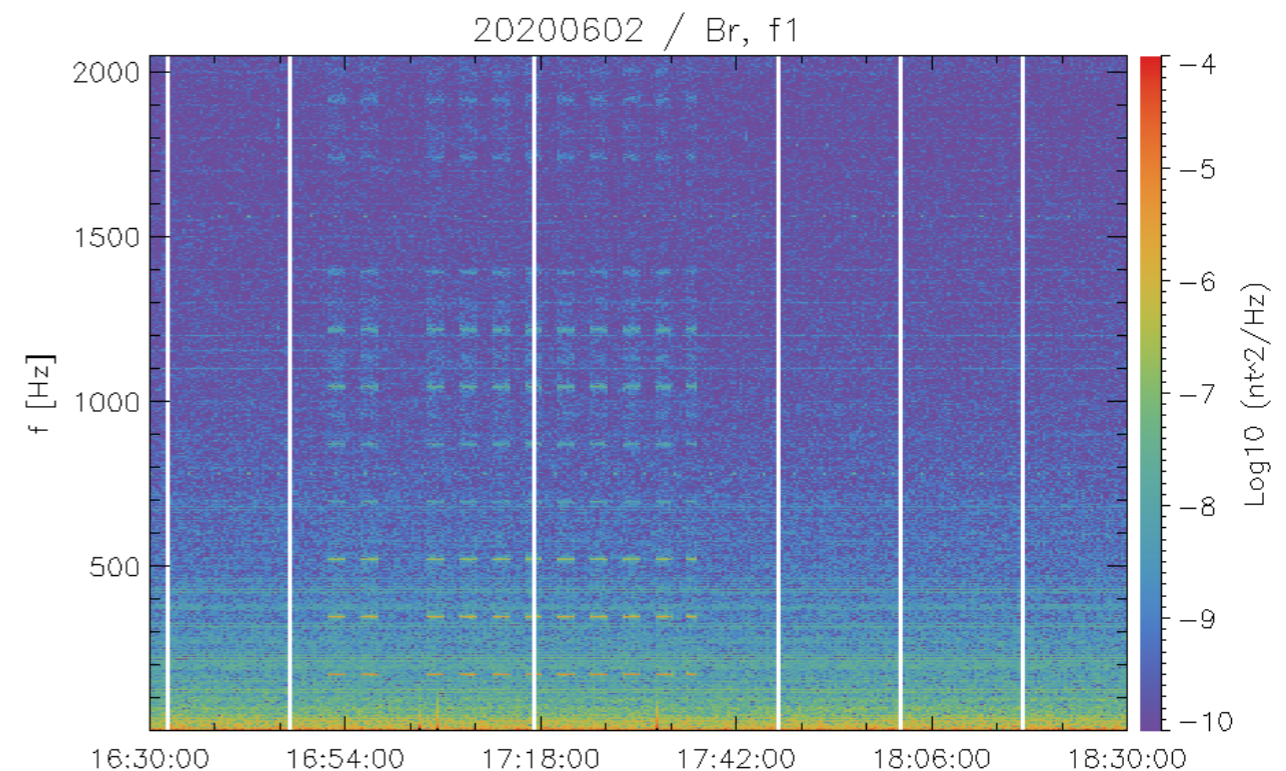
8:47: SoloHI standby power on

21:17 SoloHI Off

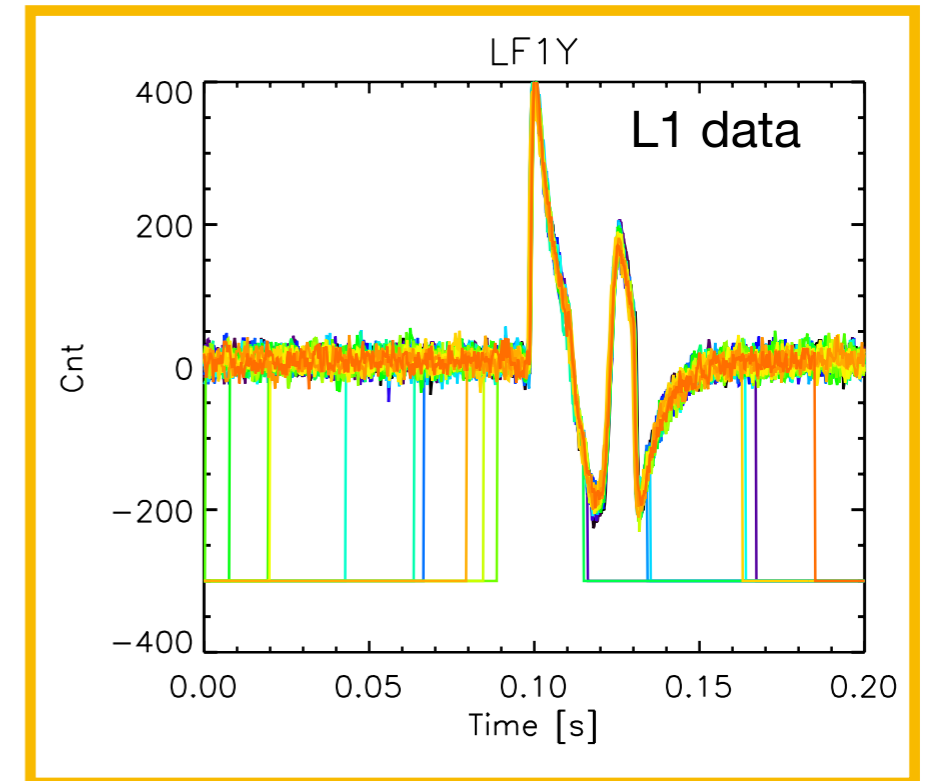
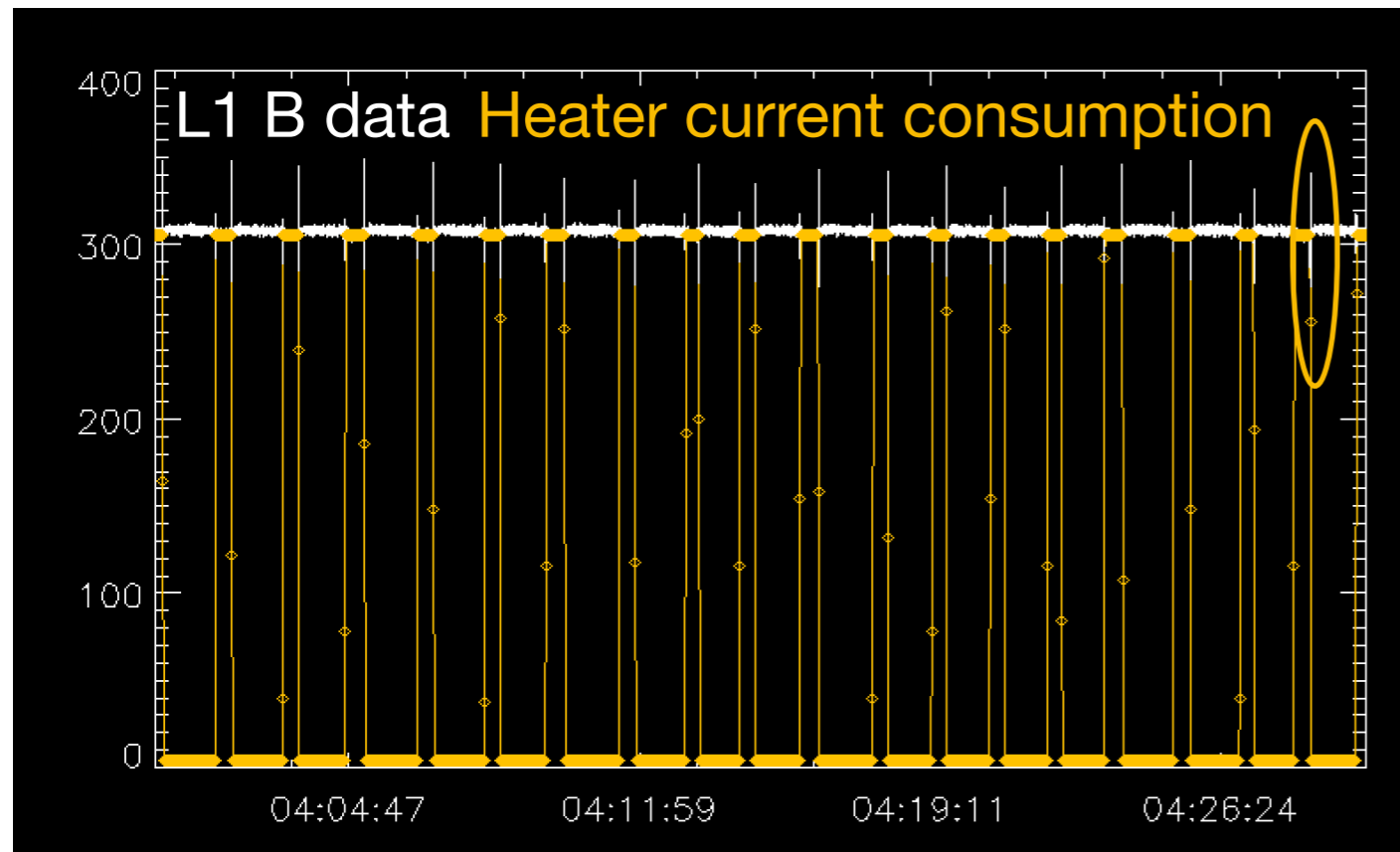
16:47 EUI to EMC Mode 2

17:47 EUI to EMC Mode 1a+

Other instruments do not seem to affect strongly the magnetic field

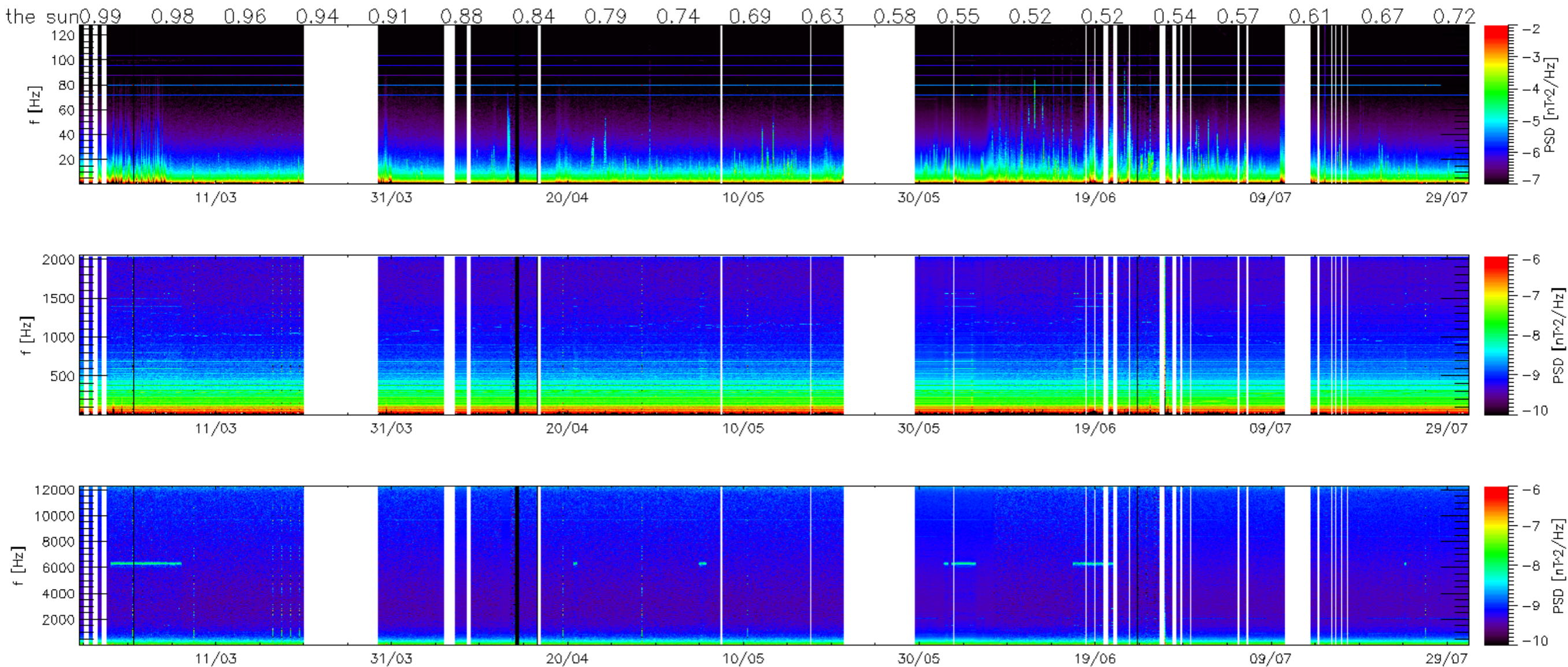


SCM heaters

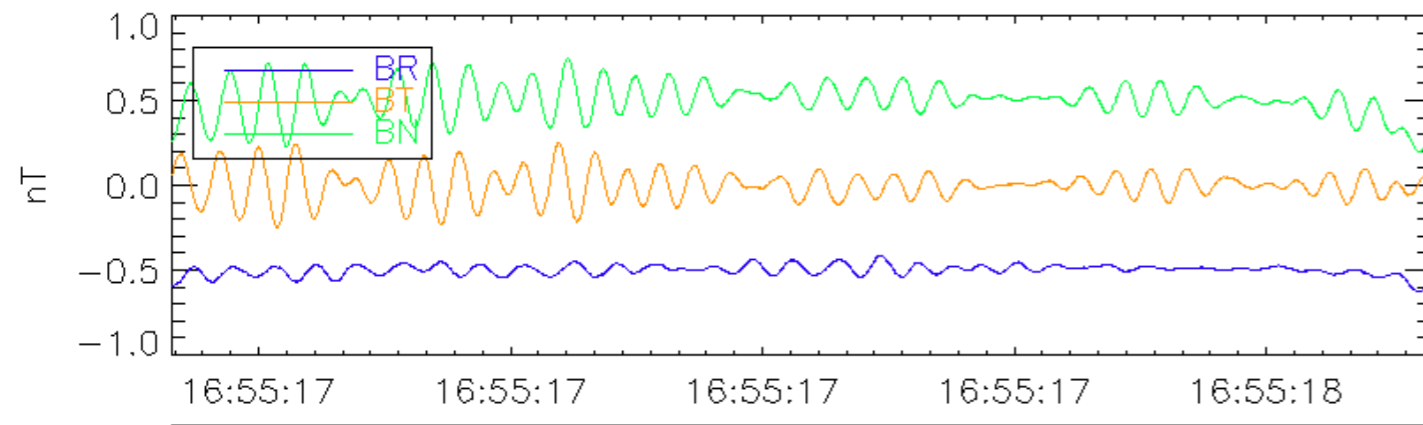
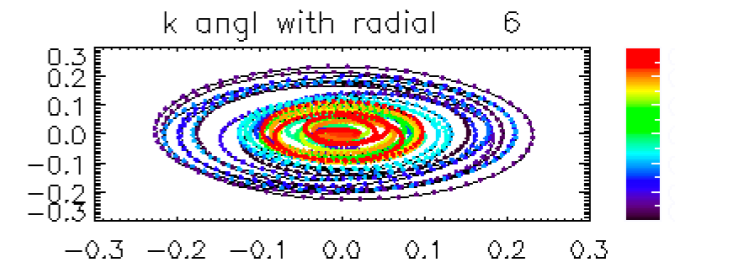
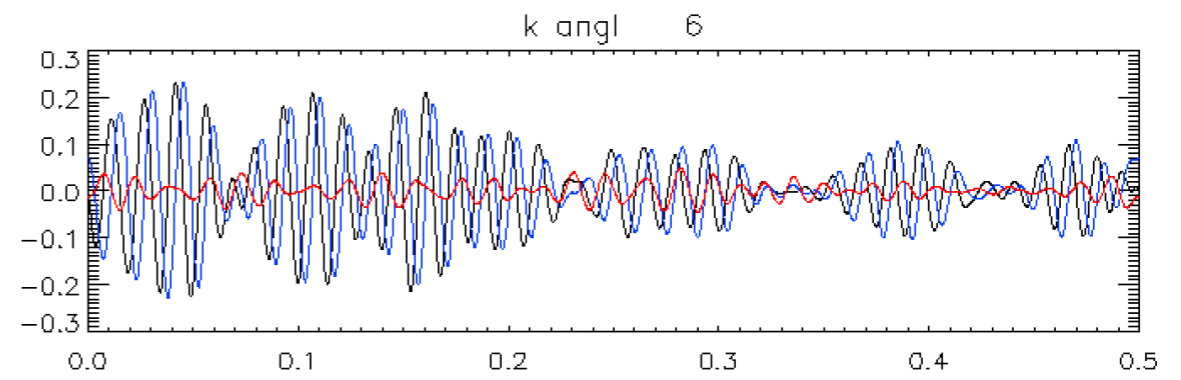
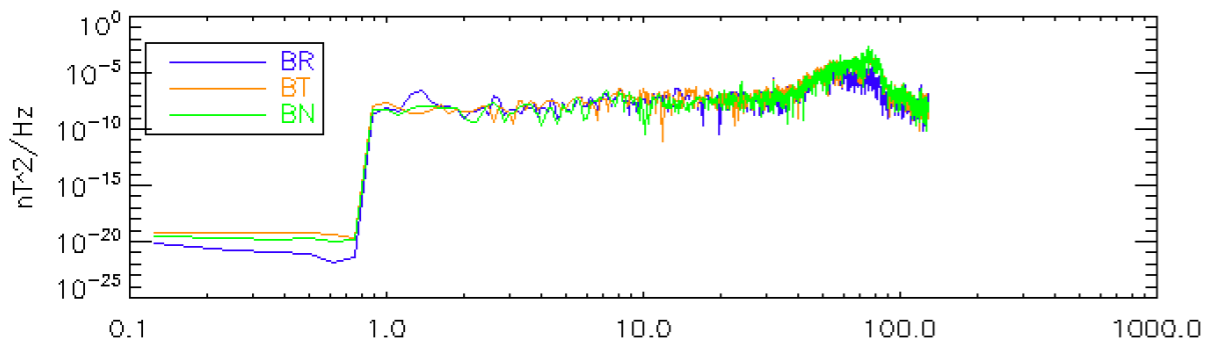
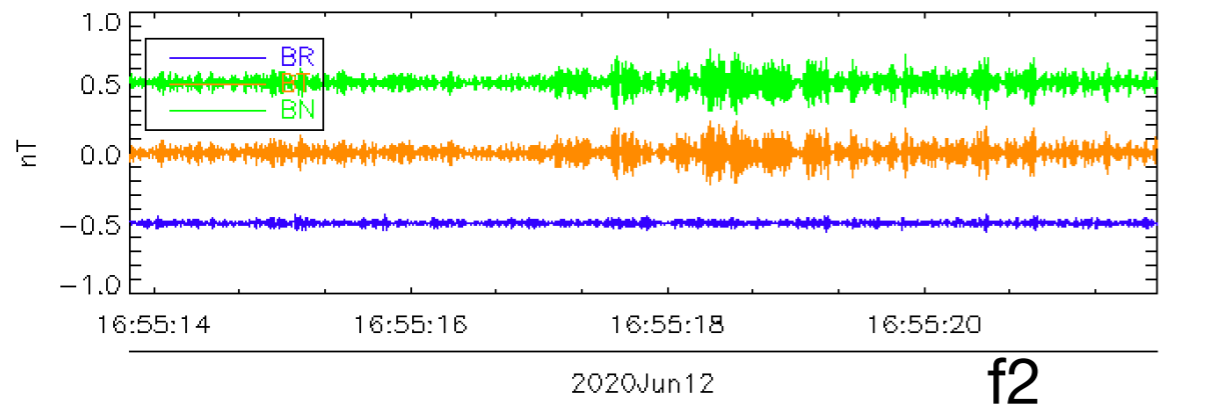


- * "heater events" are now flagged with bitmask; time precision will be improved soon.
- * Impact on the calibration of the snapshot containing the event ongoing
- * For spectrogram representation, the actual solution is to replace the event by noise
- * Heater current consumption unchanged (0.92W)

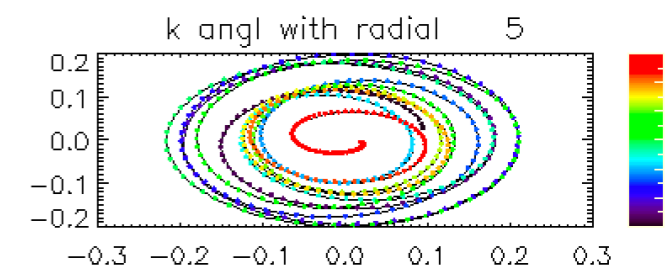
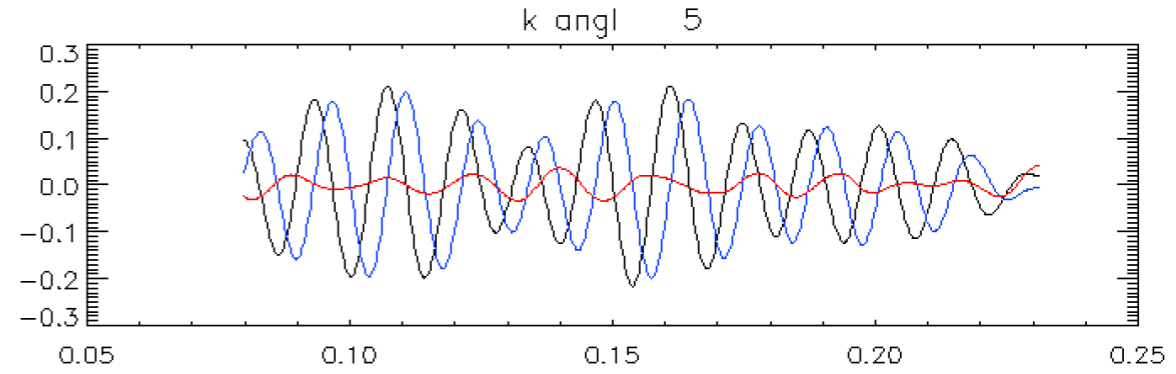
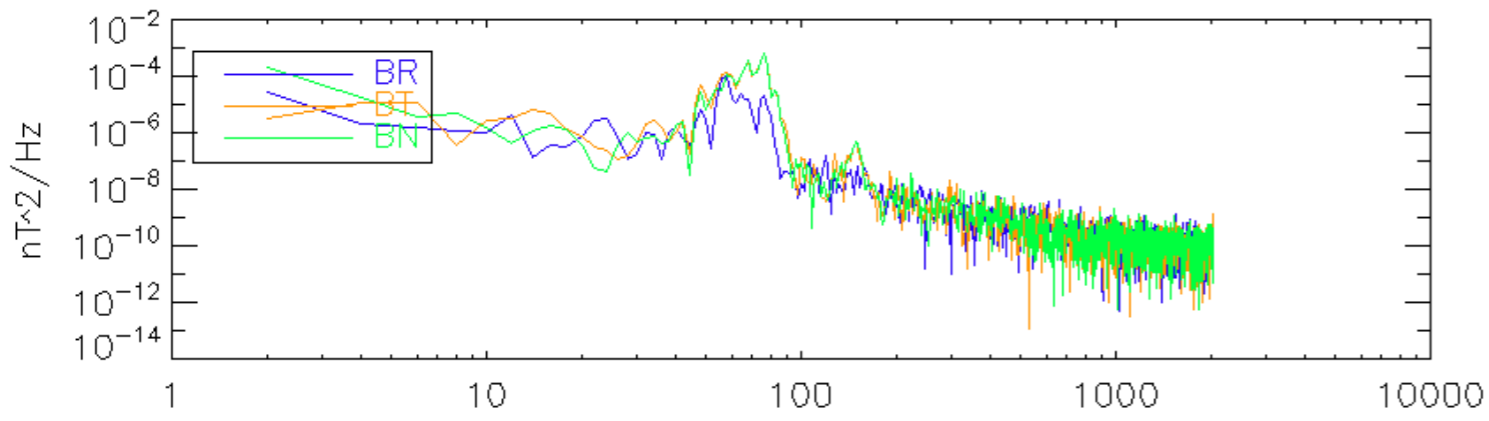
SCM mission data



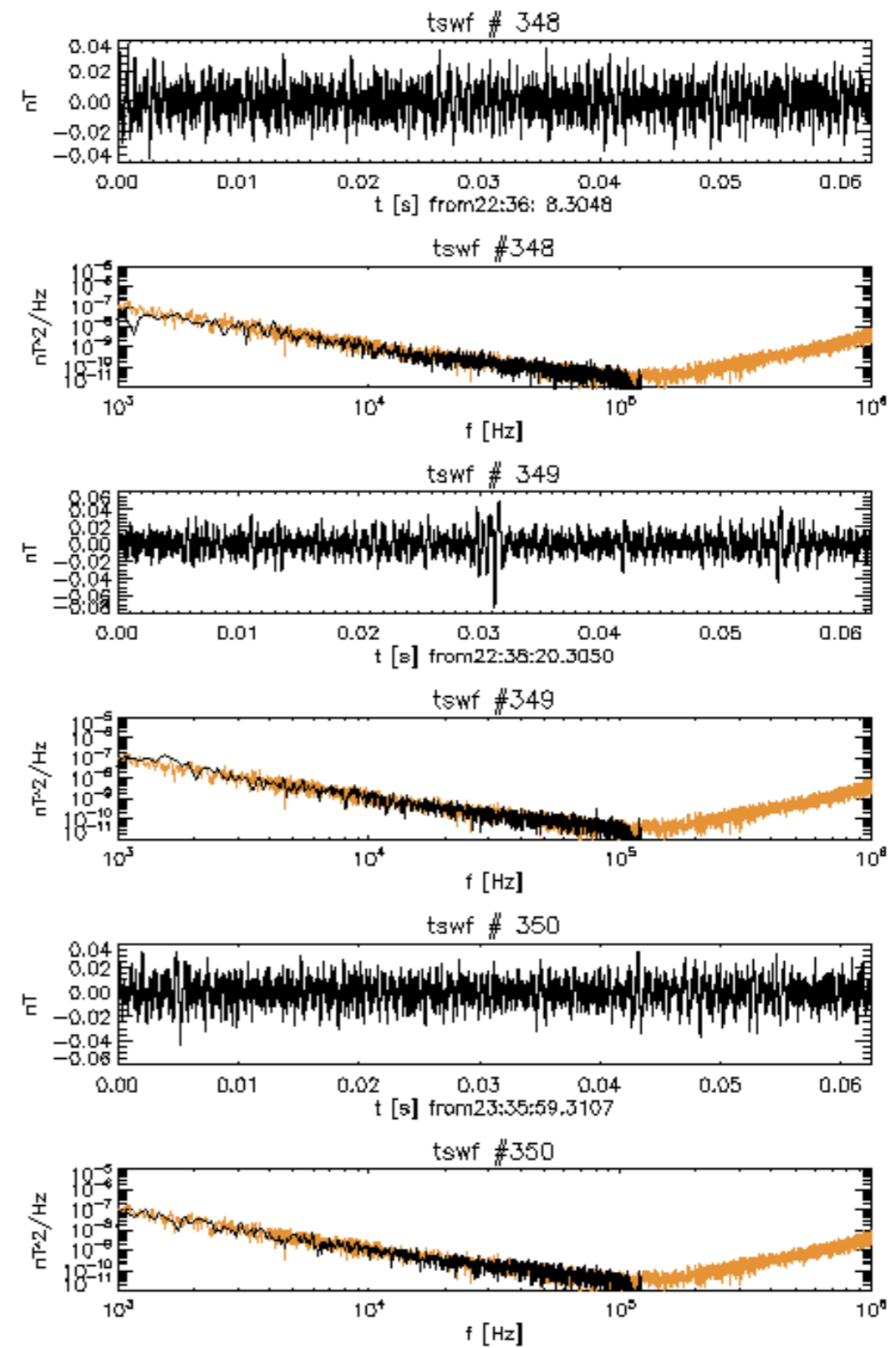
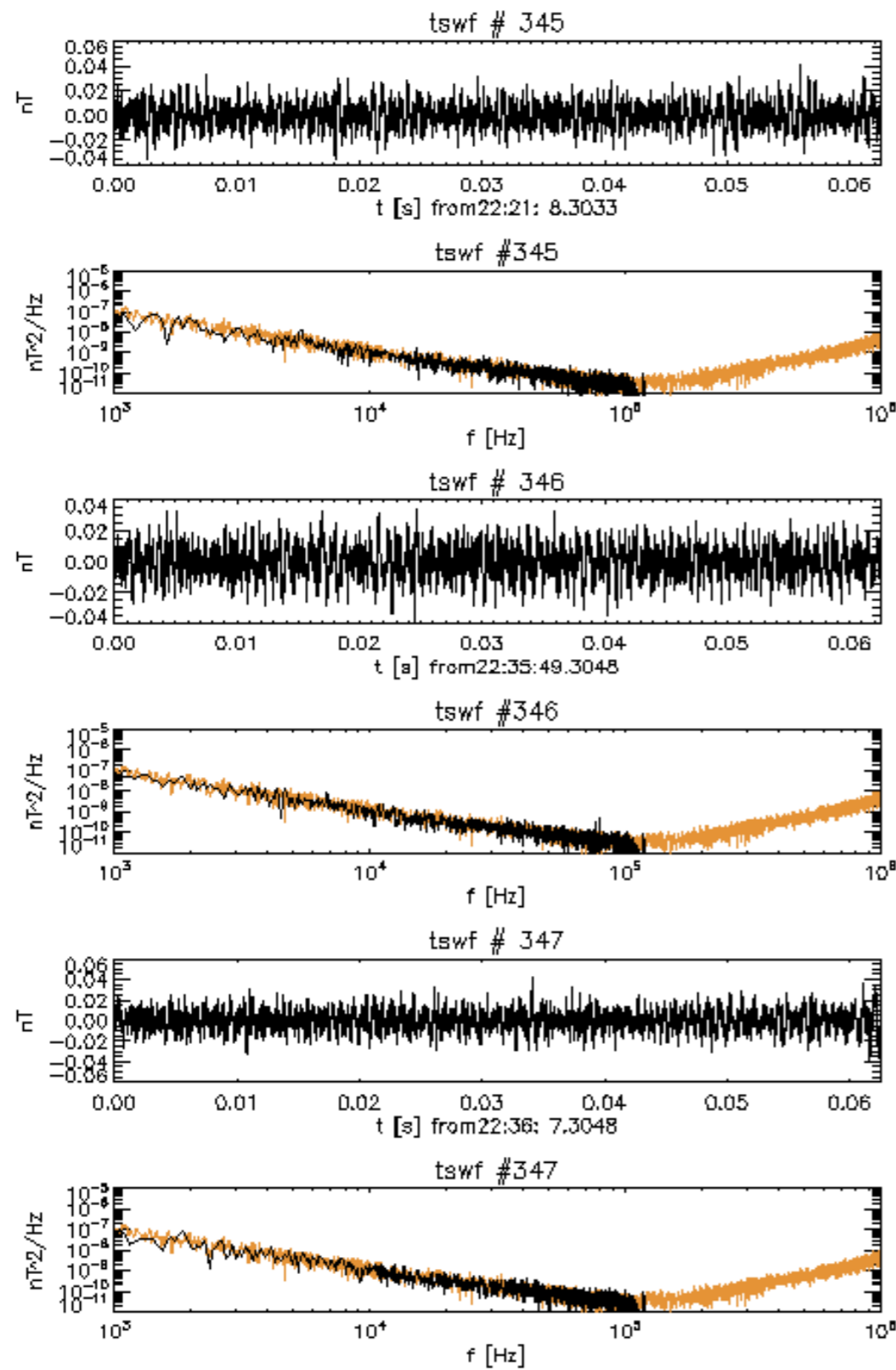
- SCM is performing well, some science can be done !
- note that physical signal is getting rare where getting far from the Sun



2020Jun12 **f1**



SCM MF data (20 June)



take home

- SCM LF are quite ok, but have interfacts: Spacecraft and SCM heaters mostly
- Can be used for waves and turbulence studies, get in touch
- You can search for hidden signal in SCM MF channel
- Currently working on:
 - readme file to use SCM data
 - SCM in flight performance paper
 - Whistler overview

